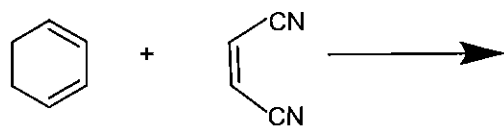
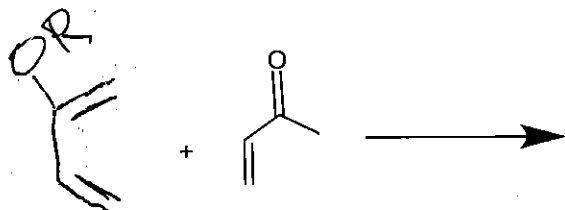
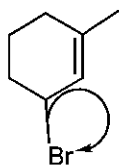


CHE 242 Unit VI Practice

1 Show the product of the following DA reactions:

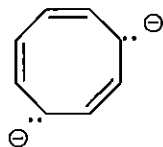
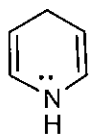
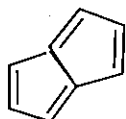
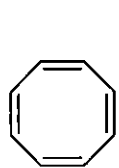


2 Draw all resonance structures of the resulting carbocation:

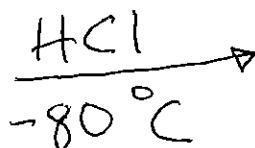
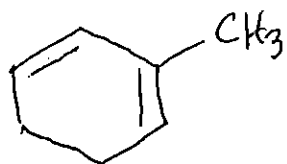


3 Draw the structures of phenol, Toluene, meta xylenes, and aniline.

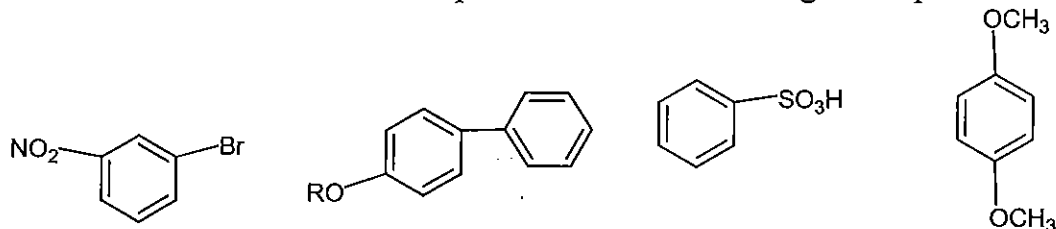
4 Determine if the compounds below are aromatic, antiaromatic, or nonaromatic:



5. DRAW THE PRODUCT OF THE FOLLOWING REACTION



6 Predict the EAS mononitration products of the following 4 compounds:



7 Show a synthetic route from benzene to meta ethyl -bromobenzene

8 Draw the major product of the reaction of methoxy benzene (anisole) with fuming sulfuric acid.

9 Explain briefly the concept of aromaticity

10 Explain briefly the concepts of activating vs. deactivating groups.

11 Explain briefly the concept of an ortho/para vs. meta director.

12 Explain briefly the limitations of the Friedel Crafts alkylation and how these limitations might be overcome in a synthesis.