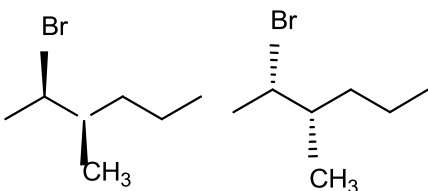
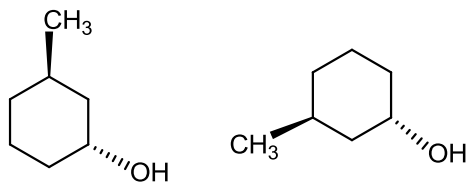
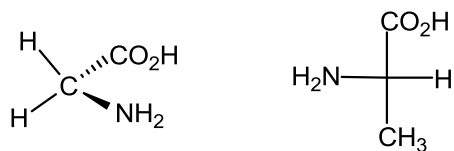


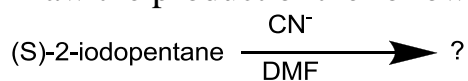
## CHE 240 Unit IV Practice

- 1 For each of the following 3 pairs of isomers, determine what the isomeric relationship is (enantiomers/diastereomers/meso/same)

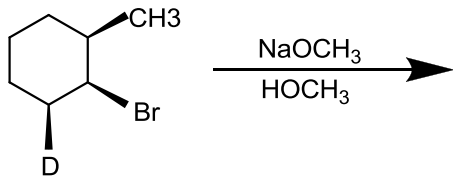


- 2 Draw (1R, 2R) 1-bromo-2-chlorocyclobutane

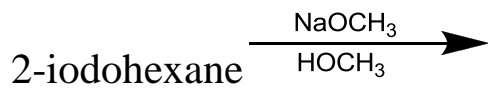
- 3 Draw the product of the following reaction.



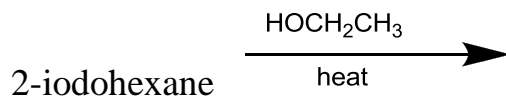
- 4 Draw the substitution and elimination products:



5 What are the 2 most likely mechanisms for each of the following 2 reactions



and



6 Define the following terms:

solvolysis

configuration

specific rotation

polarized light